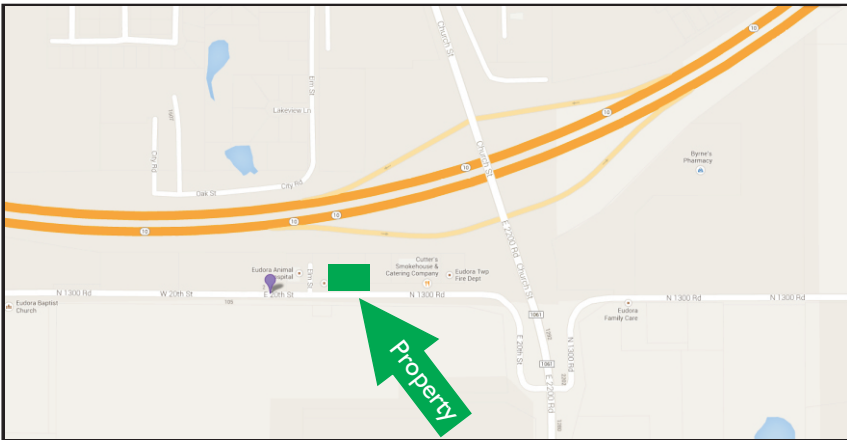
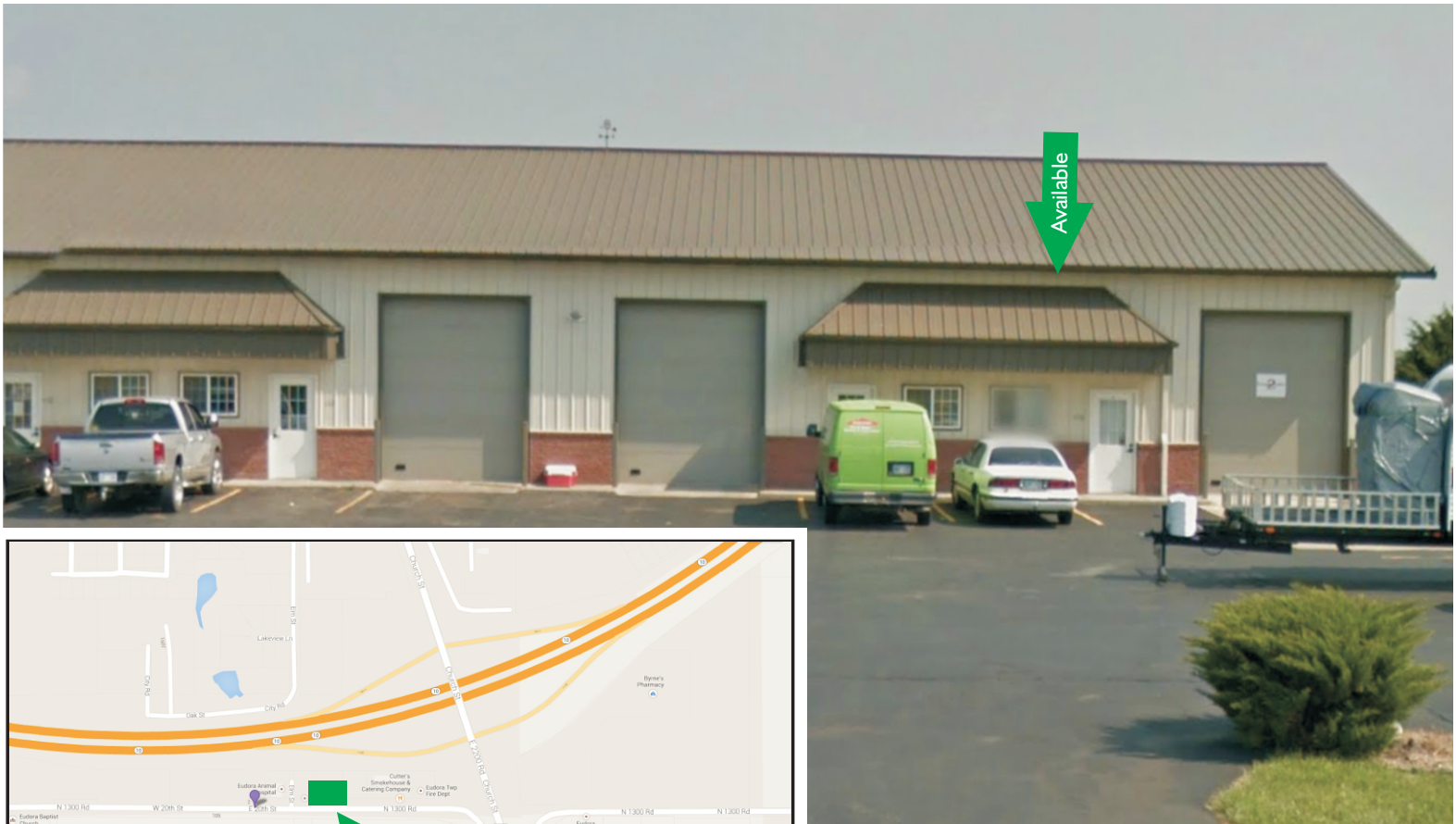


116 E. 20th St. Eudora, Kansas

For Lease



Property Description

This 4,000 sf building is zoned Commercial and has a 1,500 sf space available for Lease. The space is perfect for businesses seeking office, retail, or flex/warehouse space. The building has excellent highway visibility with quick access to K-10 Highway, and minutes from Lawrence and Kansas City.

Property Highlights

- 1,500 sf Available
- Lease Rate - \$975/mo.
- Drive-In Garage
- Off-street parking
- Flex - Retail, Office, Warehouse
- Quick Access to K-10 Highway
- Excellent Highway Visibility