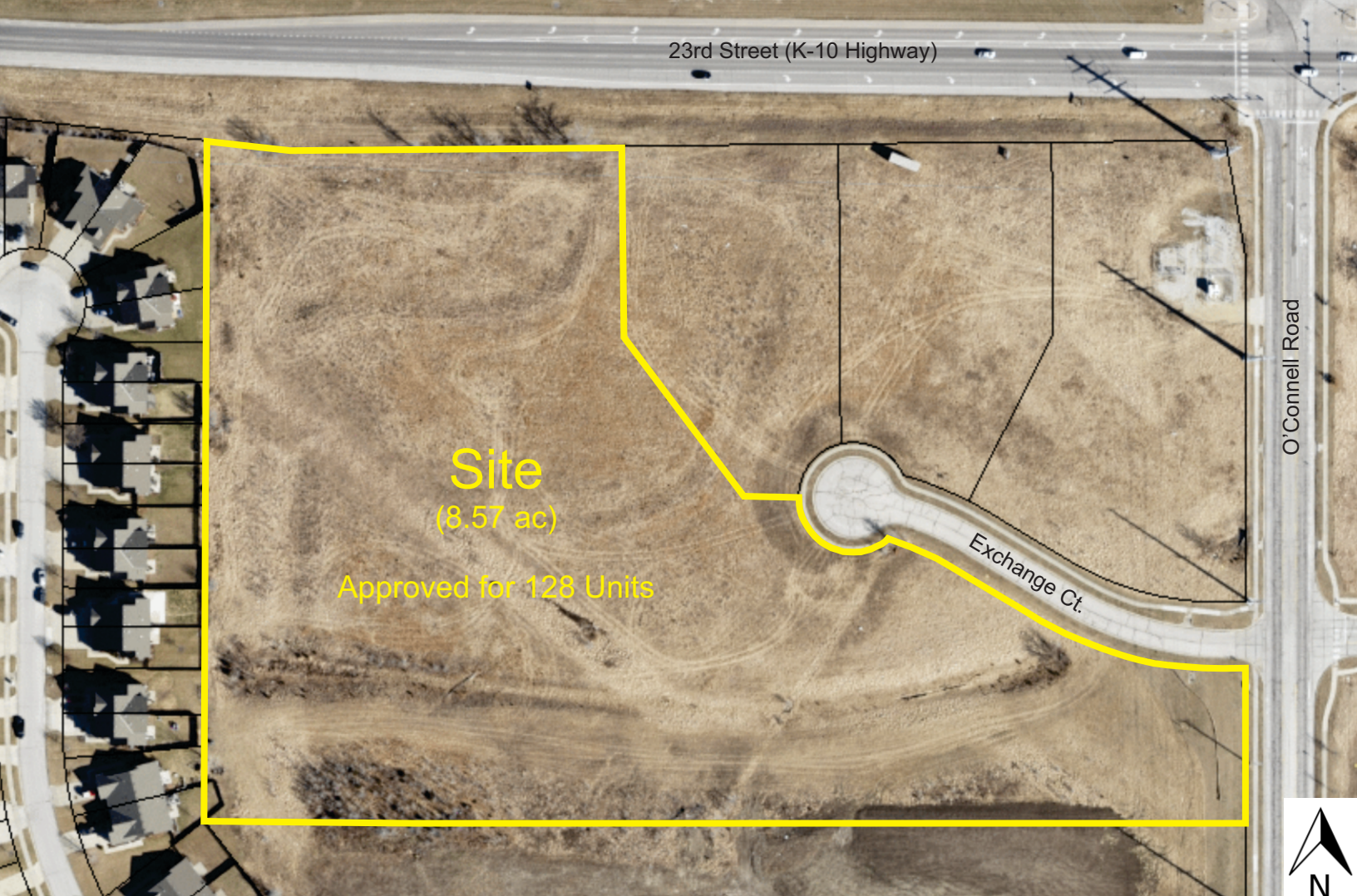


2115 Exchange Ct. | Lawrence, Kansas

**FOR SALE**



### Property Description

This property was recently approved for a 128 unit apartment project + clubhouse. Utilities are to the site and plans ready. This area has experienced recent growth with residential, commercial, and the City's new Venture Business Park. The site is located minutes from downtown and KU, and has quick access to the K-10 bypass (SLT).

### Property Highlights

- For Sale - \$900,000
- Approved for 128 Units + Clubhouse
- Minutes from Downtown & KU
- 8.57 +/- Acres - Development Ready
- Plans Ready & Available
- Quick Access to K-10 Bypass (SLT)

Information furnished is from sources deemed reliable, but is not guaranteed and is subject to change without notice. This document has been prepared by Johnson Group, LLC (JG) for advertising and general conceptual information only. JG makes no guarantees, representations or warranties of any kind, expressed or implied, regarding the information. Any interested party should perform their own due diligence as to the accuracy of the information.

901 New Hampshire St., Ste. 201  
Lawrence, KS 66044  
www.JohnsonGroupLLC.com