

**2206 E. 23rd St.** Lawrence, Kansas  
Knights of Columbus property

**Price Reduced**



## Property Description

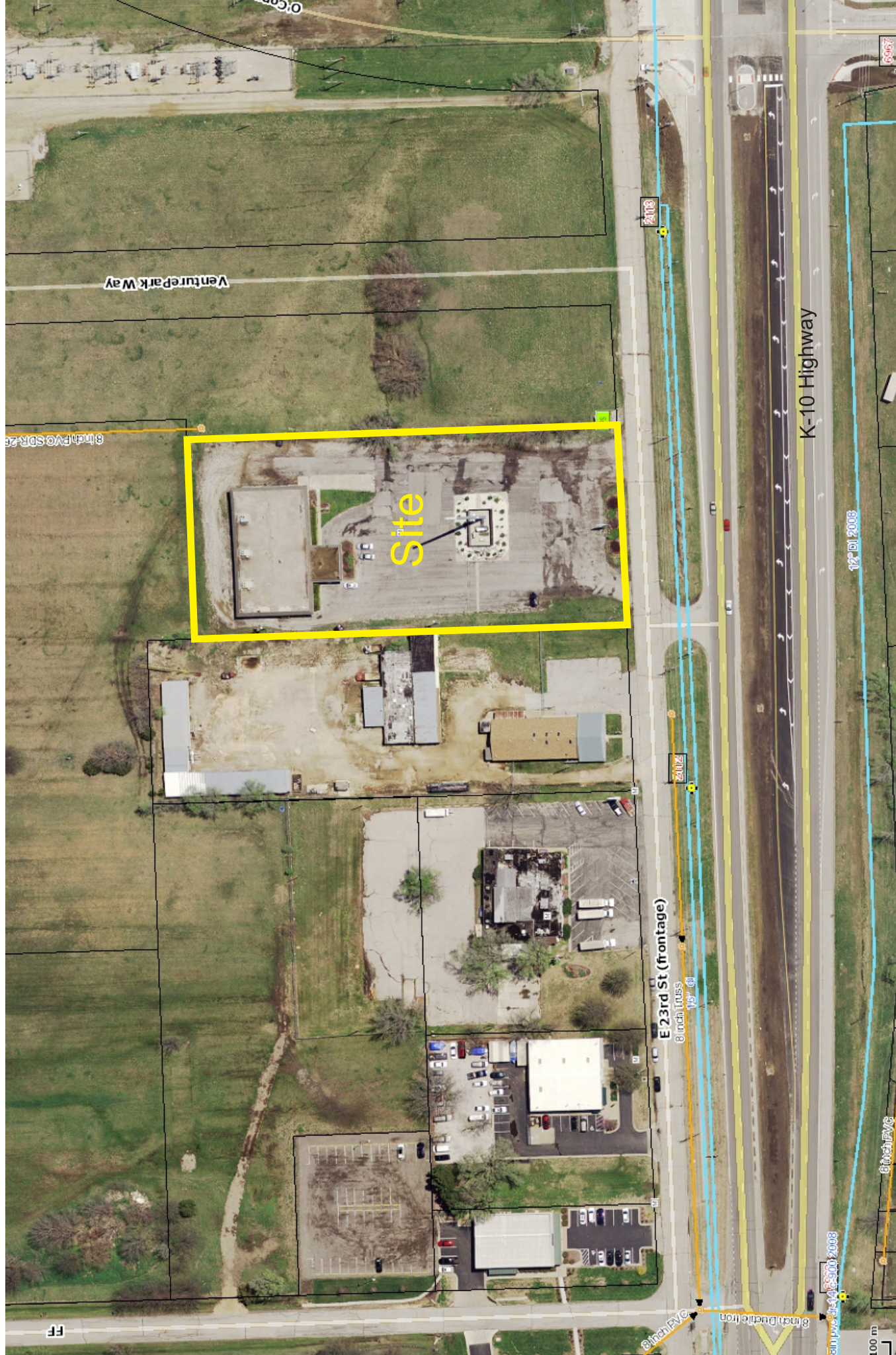
This building was originally built for and is currently being used by the Knights of Columbus organization. The building consists of 2 levels with kitchen, restrooms, large event/gathering space, and storage on each level. The property has abundant parking and sits adjacent to Lawrence's newest business park, Venture Park. The property is located on the East side of Lawrence with immediate access to K-10 highway, residential and retail services.

## Property Highlights

For Sale - ~~\$425,000~~ \$375,000  
K-10 Visibility and Access

Adjacent to Venture Park  
Cell Tower Lease Income  
Potential Re-Development Site

Large Parking Lot  
Two Kitchens & Open Space



Knights of Columbus  
2206 E. 23rd St. - Lawrence, KS

**JOHNSON GROUP**  
 REAL ESTATE | ENGINEERING | CONSTRUCTION  
 785.550.7126 | www.johnsongroupllc.com  
 900 Mass. St., Ste. 409 | P.O. Box 1058 | Lawrence, KS 66044