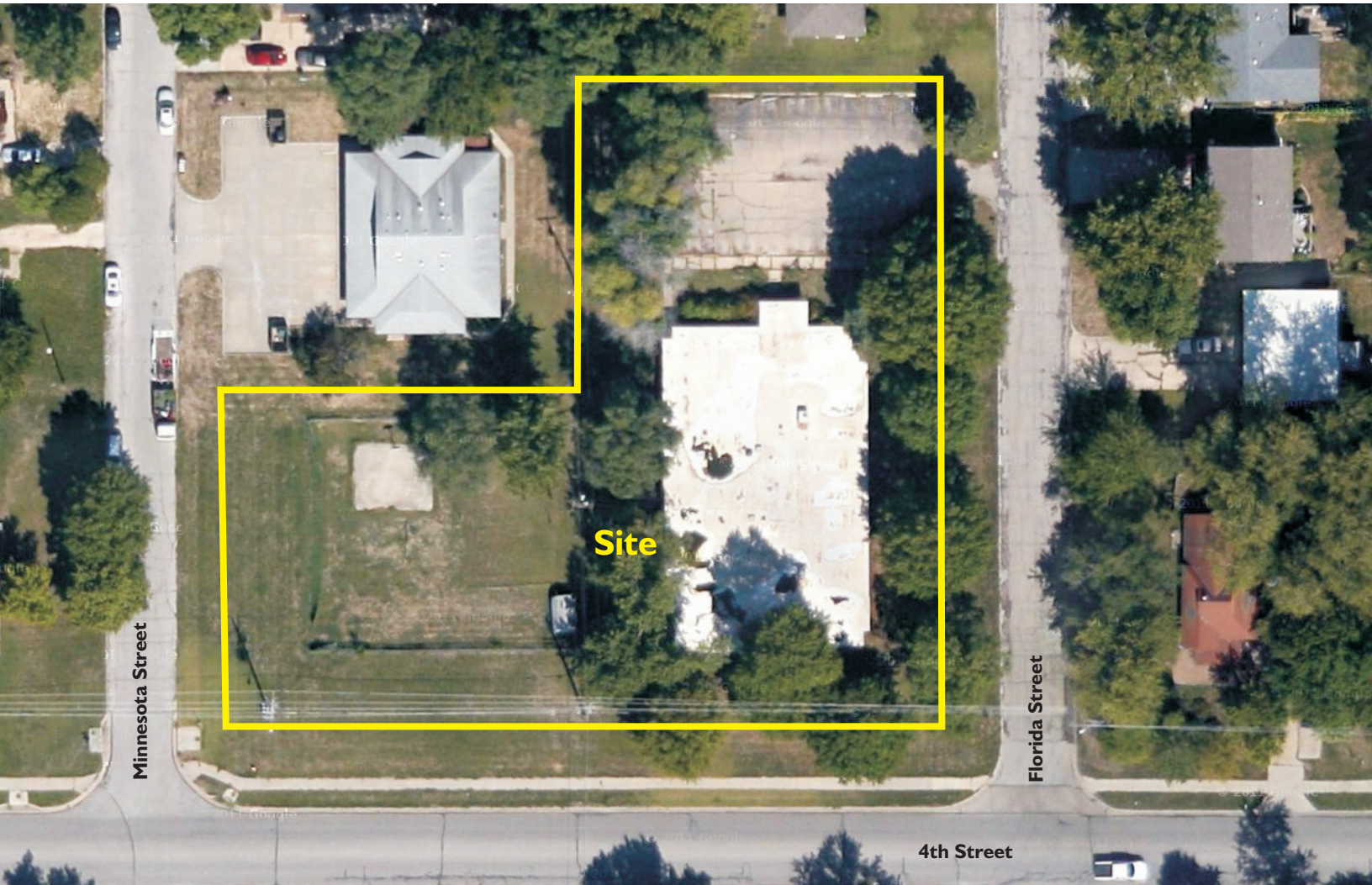


# 345 Florida St. Lawrence, Kansas



## Property Description

This property is zoned Residential Office (RSO) and home to a former community services building. The property is centrally located in Lawrence and surrounded by a residential neighborhood. It sits one block from Lawrence Memorial Hospital, minutes from downtown, and Interstate 70 highway. Given the location, the property is ideal for medical, office, childcare, community services, residential, or other compatible uses.

## Property Highlights

8,000 sf building

Sales Price - \$350,000

Lot Size - 1.07 ac

Off-street parking

Minutes from downtown

Quick access to I-70 Highway

One block from Lawrence Memorial Hospital

Several use possibilities