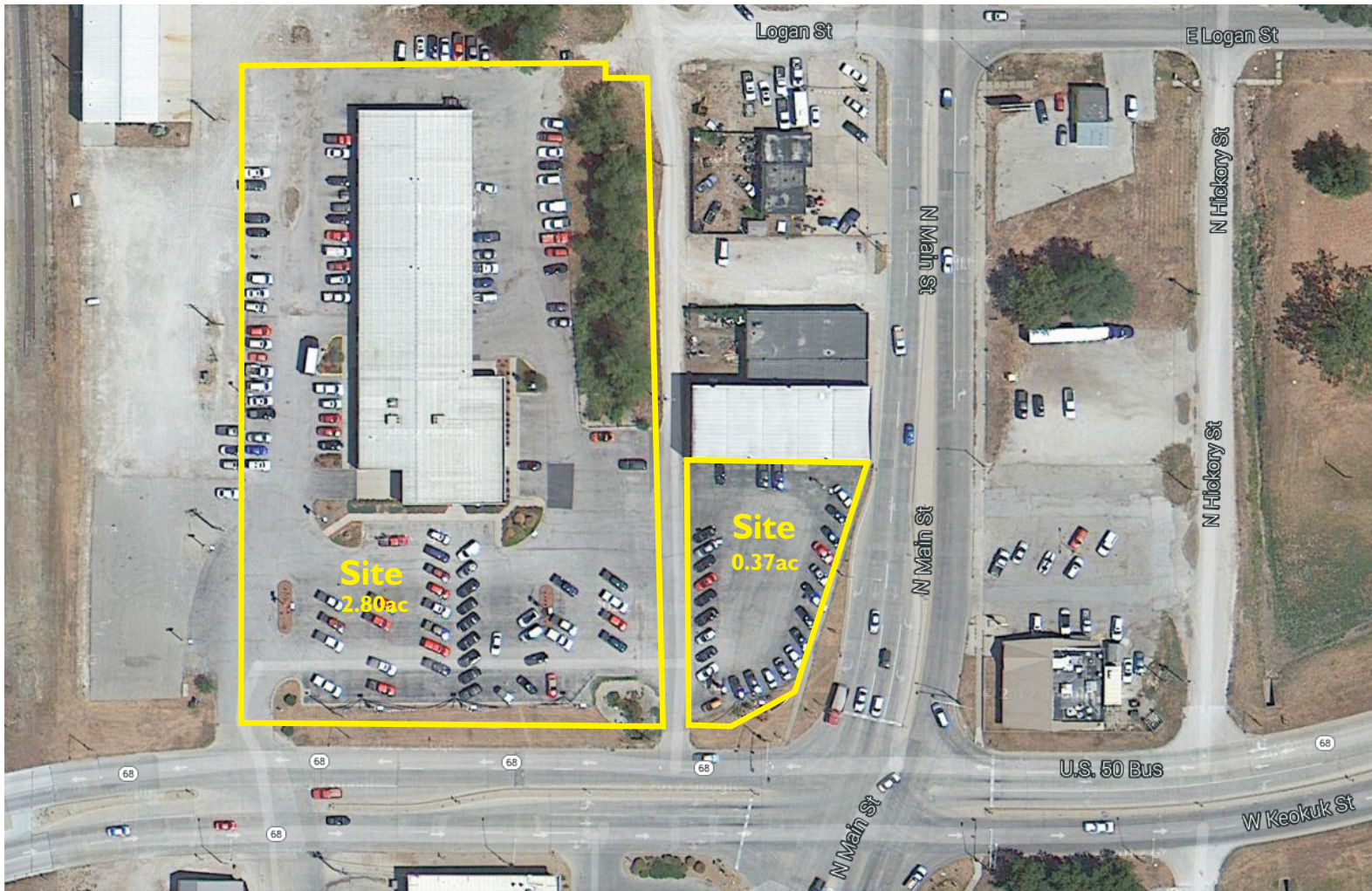


402 N. Main Street | Ottawa, Kansas



Property Description

The property consists of an 18,000 sf building. 6,750 sf is finished into showroom/sale, offices, and restrooms. 11,250 is warehouse, parts and service area. The property was originally developed for an automobile dealership facility and includes a 0.37ac pad site. The property is located at the Northwest corner of Highway 68 (US Business Business/W. Keokuk St.) and N. Main Street intersection, in the City of Ottawa, Kansas, only blocks from downtown, less than 2 miles from Interstate 35 Highway and Highway 68 Interchange, and minutes from the new US Highway 59 and I-35 Highway interchange.

Property Highlights

Lease Price - \$6.50/sf NNN

18,000 sf Building

Excellent access to Major Highways

Sales Price - \$950,000

3.17 ac

Pad Site