

5150 Clinton Parkway Lawrence, Kansas

For Sale



Property Description

This property was originally built as a dance/gymnastics studio. The space includes a retail/store area, reception desk, office space, and four large activity rooms with mirrors. There are three rooms with high windows which provide natural lighting and professional hardwood floors. The large gym area contains approximately 5,000 sf with garage door opening and large fan/ventilation system for cooling. Women's restroom features a locker room w/shower. The site is zoned Rm12 making it suitable for recreation uses, daycare, and churches. The property is located on the West side of Lawrence adjacent to the Lawrence Tennis Center, minutes from Clinton Lake, youth sports fields, South Lawrence Trafficway, and Rock Chalk Park. Income Property with Tenant in place. Call for details.

Property Highlights

For Sale - \$795,000

K-10/SLT Visibility and Access

Income Property

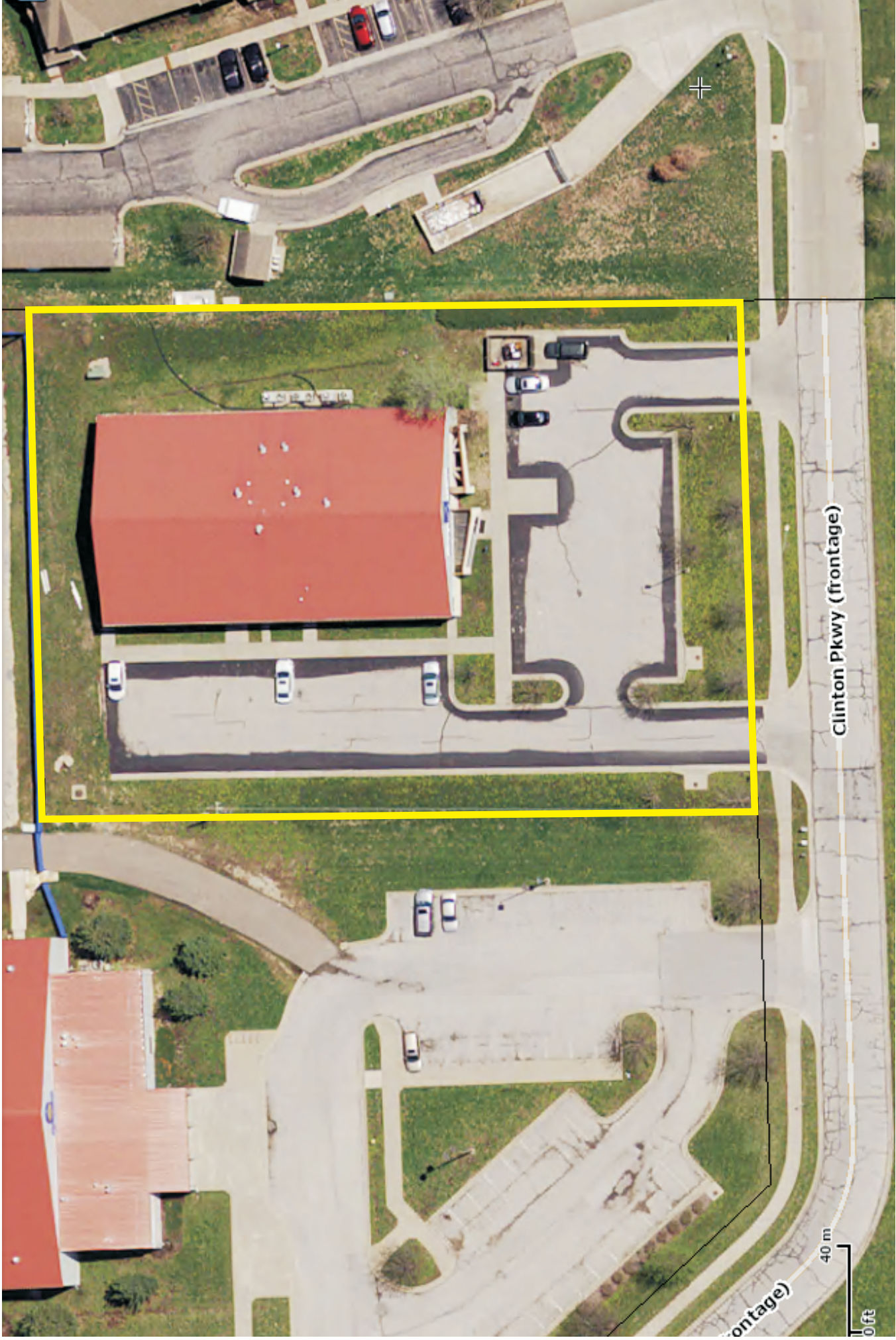
Built for Recreation Uses

Near Sporting Activities

Tenant in Place

Minutes from Rock Chalk Park

Multiple Rooms & Open Space



5150 Clinton Parkway - Lawrence, KS

JOHNSON GROUP
REAL ESTATE | ENGINEERING | CONSTRUCTION

785.550.7126 | www.johnsongroupllc.com
900 Mass. St., Ste. 409 | P.O. Box 1058 | Lawrence, KS 66044

