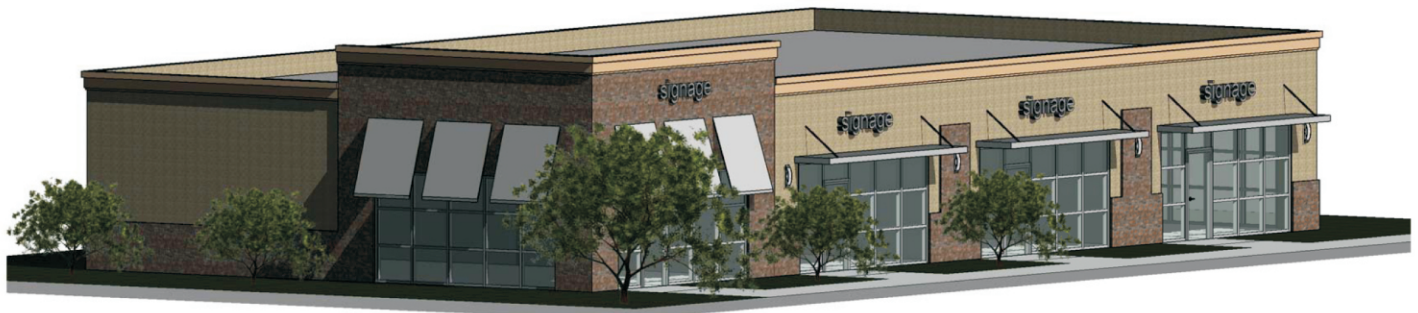


# 7th & Monterey Way Lawrence, Kansas

**For Lease**



## Property Description

This to be developed project is a 5,000 sf commercial building that provides the opportunity for custom Tenant finishes. Space available in size from 1,250-5,000 sf. Estimated completion and delivery date is approximately 6-9 months following lease execution.

This new project is located in Lawrence, Kansas, near the SE corner of the intersection of 6th Street and Monterey Way, in an in-fill commercial development adjacent to commercial services and surrounded by residential neighborhoods. The property neighbors a Hy-Vee anchored commercial center, Applebees, First State Bank & Trust, and other commercial businesses/services.

## Property Highlights

5,000 sf Available

Lease Rate - \$18.00/sf NNN

Divisible to 1,250 sf

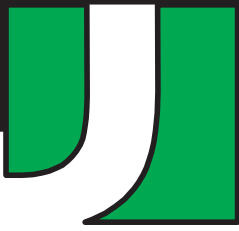
Off-street Parking

New Construction

Tenant Custom Finishes

Great Visibility and Access

Retail, Office



# 7th & Monterey Way Lawrence, Kansas



